

# Swivel castor with total lock CST 160 EB

Transport Series CD - Wheel E

-20 °C - +70 °C

- +++

swivels easily
- ++

wear resistant
- ++

shock proof
- +++

floor protective
- ++

weather proof

## Wheel



Tread: Elastic solid rubber tyre, black, 73±5 Shore A, vulcanised on wheel centre

Wheel centre: Die-cast aluminium alloy

## Fork



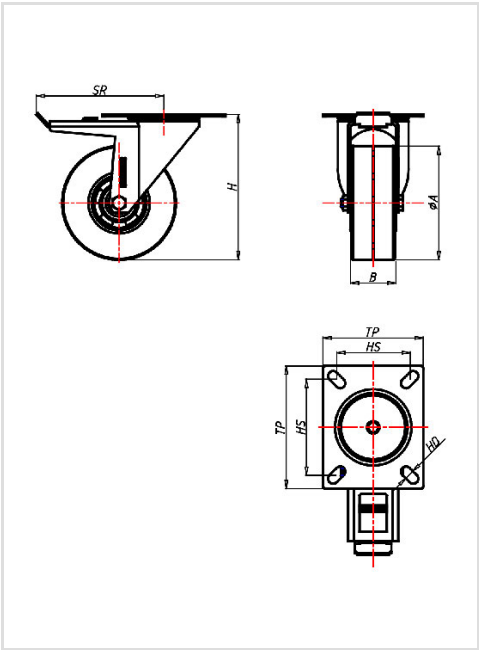
Finish: electro-zinc plated, double ball bearing – revited, hardened steel balls thermoplastic dust protection ring, wheel axle bolted, total lock

|   |                |
|---|----------------|
| Swivel castor with total lockWheel-Ø A x width B mm: 160x50 |                |
| Load Capacity kg:   | 300            |
| Load capacity tested according to EN 12530 and EN 12527     |                |
| Overall height H mm:  | 196            |
| Dimension of top plate TP                                   | 135x110        |
| mm:   |                |
| Hole spacing HS mm:   | 105x80         |
| Hole-Ø HD mm:   | 11             |
| Swivel radius SR mm:  | 168            |
| Wheel bearing:  | Roller bearing |

## Advantages

- ✓ excellent running performance
- ✓ very silent in motion
- ✓ low rolling resistance
- ✓ good abrasion resistance
- ✓ corrosion resistant
- ✓ non-marking in grey

©Copyright 2024 Rollenbau GmbH, www.rollenbau.at 20.05.2024



## Applications

- Bins
- Refuse bins
- Dollies
- Trash containers
- Refuse containers